

A photograph of a 100-dollar bill being assembled from puzzle pieces on a dark wooden surface. The puzzle is partially completed, with several pieces missing. The bill features the portrait of Benjamin Franklin and the text 'ONE HUNDRED DOLLARS'. The puzzle pieces are scattered around the main assembly, some showing the bill's details and others showing the wood grain.

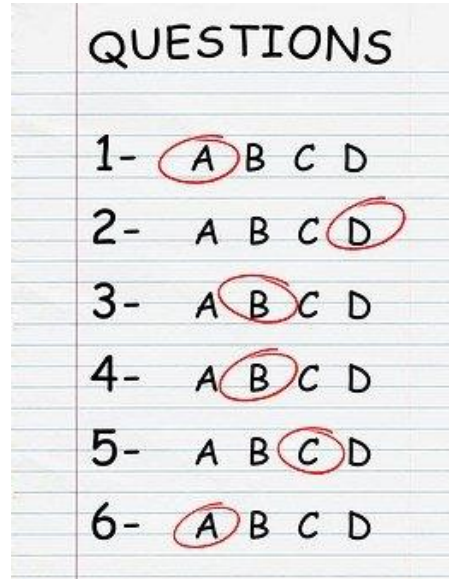
Diagnoseonderzoek

1. Intake en probleemanalyse
2. Onderzoekopzet
3. Uitvoering onderzoek
4. Analyse en verslag
5. Advies en presentatie

Onderzoeksmethoden bij diagnoseonderzoek



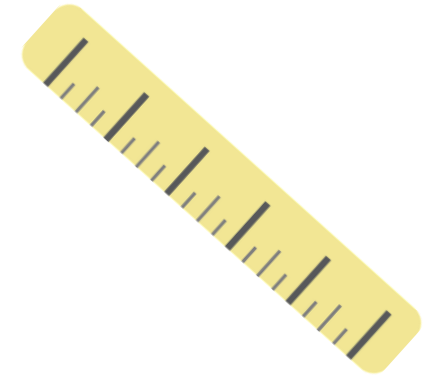
(Groeps)Interview



Vragenlijst



Benchmark



Meten



Mindmapping



Lego



Observatie



Brown paper-sessie



Storytelling